

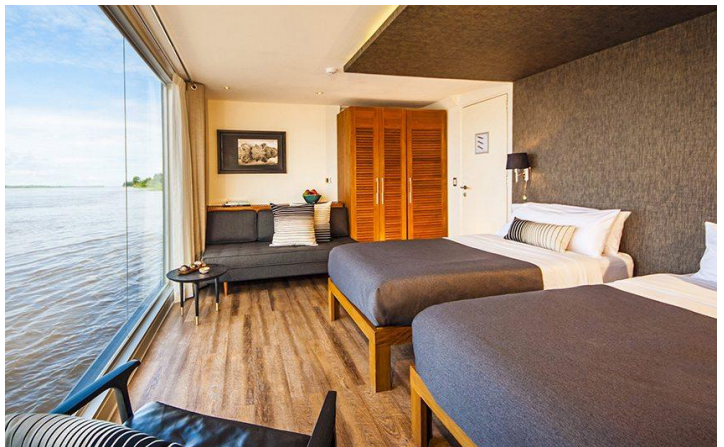
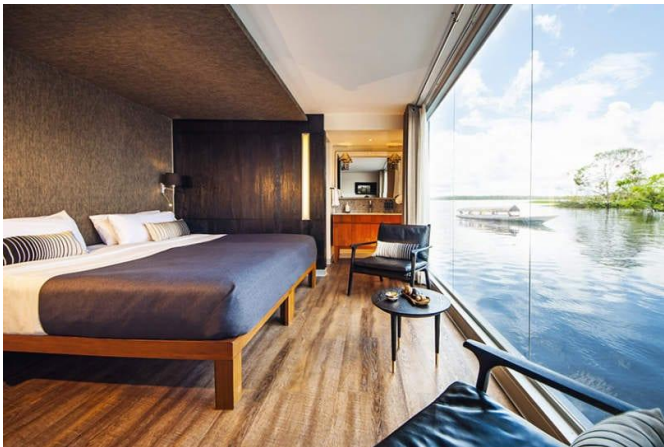


AMAZON RIVER LUXURY CRUISE ARIA AMAZON FACT SHEET

The 45 meter long **Aria Amazon** was designed in 2011 by the innovative Peruvian architect Jordi Puig. In 2015, the vessel was completely refreshed with new bed linens and state-of-the-art lighting. Common areas include an Indoor Bar, Indoor Lounge, Dining Room, Outside Lounge, Outdoor Jacuzzi, Exercise Room, Massage Room, Observation Deck, Boutique & Spa.

SUITES

All 16 Design Suites on the first and second deck measure 23 sq m, have individual air conditioning, en suite sitting areas, polished timber flooring and a floor to ceiling glass wall facing the Amazon River. En suite bathrooms with rain shower and organic bath amenities incorporate the latest eco-sensitive technology. Four suites have inter-connecting rooms for families. Total capacity: 32 passengers with private facilities (Additional accommodation for one child in each cabin)

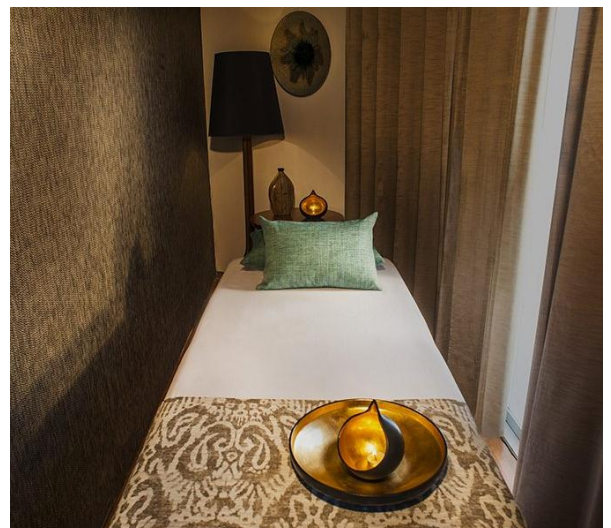


THE SPA

In 2015 a new spa menus was launched, featuring an expanded array of massage and spa services.

The Aria Amazon offers an exclusive top-deck massage room with internationally-trained therapists offering a range of massages using 100% pure, natural essential oils.

Each specially-crafted spa oil is developed from indigenous ingredients such as coconut and vanilla, and harvested from either the highlands of Peru or Amazonia before being carefully distilled and conserved, using no additives.



TECHNICAL SPECIFICATIONS

- Year Built: 2010
- Port of Embarkation: Iquitos, Peru
- Vessel's Registry: Peru
- Type of Vessel: River Expedition Vessel
- Length: 147 feet / 45 meters
- Beam: 29.5 feet / 9 meters
- Draft: 5 feet / 1.5 meters
- Gross Tonnage: 500 tons
- Cruising Speed: 12 knots
- Electricity: 220 volts
- Engines: 2 Cummins 400 HP Marine Engines
- Generators: 2 x 135 KVA Cummins (encapsulated for noise reduction)
- Water: 9,000-liter water treatment plant

THE CREW

The Aria Amazon has 27 crew members, including a cruise director, paramedic and 4 English speaking naturalist guides. Highly experienced river pilots and the most rigorous cruise ship standards ensure smooth travel and safety on the waters of the Peruvian Amazon.

SAFETY ON BOARD

Radio communication with separate battery pack; satellite phone; life jackets, fire extinguishers and smoke detectors in each cabin; flares and signals; automatic defibrillator on board.

LAUNCH BOATS USED FOR SHORE EXCURSIONS

Four auxiliary aluminum launch boats equipped with 4-stroke low emission engines; constant radio communication with the main vessel. Each boat has a capacity of 8 passengers.

ARIA AMAZON DECK PLAN

